



EUROPEAN NURSING STUDENT ASSOCIATION

Annual General Meeting 2015

Information package

This information package includes:

A draft of the AGM programme

Travel information

Accommodation information

Contact information for the ENSA board

**** Just to state that it may be subject to change****

Content

Draft of the AGM programme	3
Monday the 19 th of October:.....	3
Tuesday the 20 th of October:	3
Wednesday the 21 st of October:.....	3
Thursday the 22 nd of October	3
Friday the 23 rd of October	3
Where is the meeting?	4
Travel information	5
From Gatwick Airport	5
From Heathrow Airport	5
Public transport cards.....	6
London Tube	7
Buses.....	8
Trams	9
Accommodation information	10
SoHostel.....	10
YHA London Central.....	10
Astor Court Hotel.....	11
Astor Museum Inn	11
Marble Arc Inn.....	12
Astor Queensway.....	12
Gallery Hyde Park	13
PubLove @ The Exmouth Arms, Euston	13
Contact information for the ENSA board.....	14

Draft of the AGM programme

Monday the 19th of October:

12.00 – Opening of the AGM with ENSA president and board members

Icebreaking games

Presentation of attendants

Presentation of guests

Follow up on "Men in nursing"

16.00 – Sightseeing

19.00 – Joint dinner and London by night

Tuesday the 20th of October:

09.00 – Conference with Interprofessional Collaboration as the theme

Keynote speakers

Workshops about statements

Debate and discussion

16.00 – Royal College of Nursing Tour

19.00 – Joint dinner

Wednesday the 21st of October:

09.00 – Discussion and voting on the internal regulations

Election of focus areas

12.00 – Lunch

13.00 – Presentation of candidates and election of board members

14.30 – Evaluation of the AGM

15.00 – Thank you + goodbye hugs and kisses

Thursday the 22nd of October

The old and the new board are attending the EFN meeting

Friday the 23rd of October

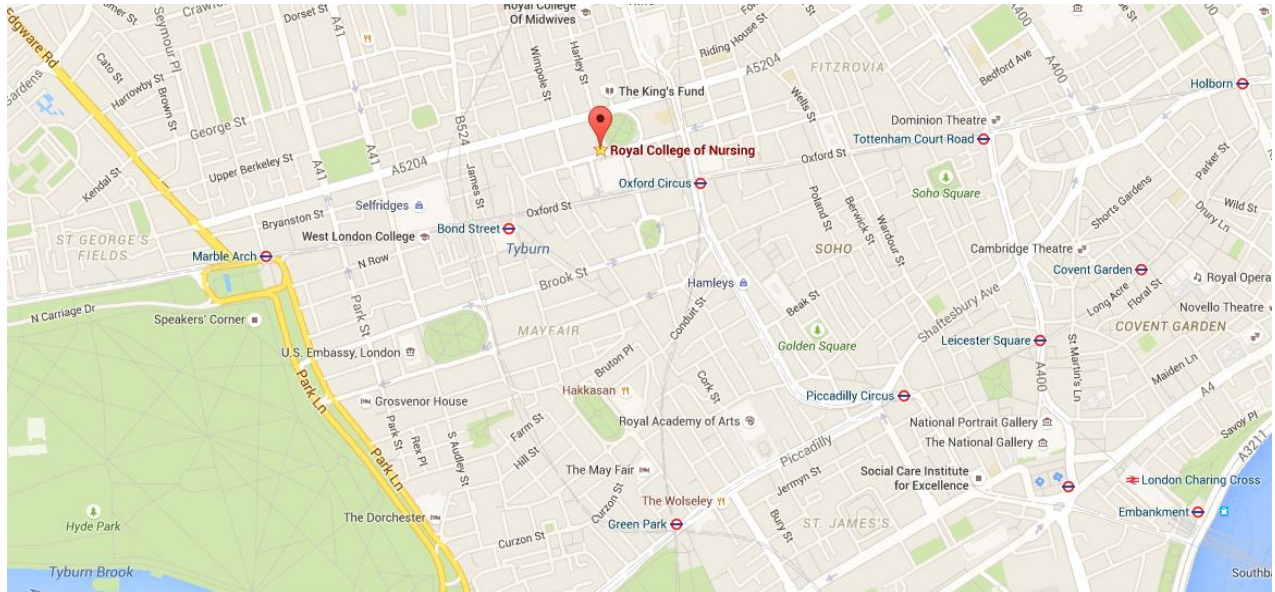
The new board is attending the EFN meeting

Where is the meeting?

The European Nursing Students Association Annual General Meeting will be held at:

Royal College of Nursing, 20 Cavendish

Square, London, W1G 0RN.



Travel information

From Gatwick Airport

You can take the Gatwick express to London Victoria station. Then from Victoria Station to Oxford Circus station. RCN's office 3 minutes walk away from the metro station. In total, it takes approximately 44 minutes.

From Heathrow Airport

You can take the Heathrow express to London Paddington and from Paddington to Oxford Circus station. RCN's office 3 minutes walk away from the metro station. In total, it takes approximately 38 minutes.

Public transport cards

Visitor Oyster Cards in London

Visitor Oyster cards are electronic smartcards that come fully charged with credit which you can spend as you travel on the **Tube**, **DLR**, London Over ground and most **National Rail** services in London: using an Oyster travel smartcard is the easiest way to travel around the city's public transport network !



Buy a Visitor Oyster Card Before You Leave Home

- Save time – your card is ready to use as soon as you arrive in London
- It's more than 50% cheaper than buying a paper travel card or single tickets with cash
- There is a daily price cap – once you have reached this limit, you won't pay any more

Buy a Visitor Oyster card before you visit London and get it delivered to your home address. A card costs £3 (non-refundable) plus postage. You can choose how much credit to add to your card.

London Tube

The London Underground rail network, or "The Tube" is a great way to travel to and from Central London.

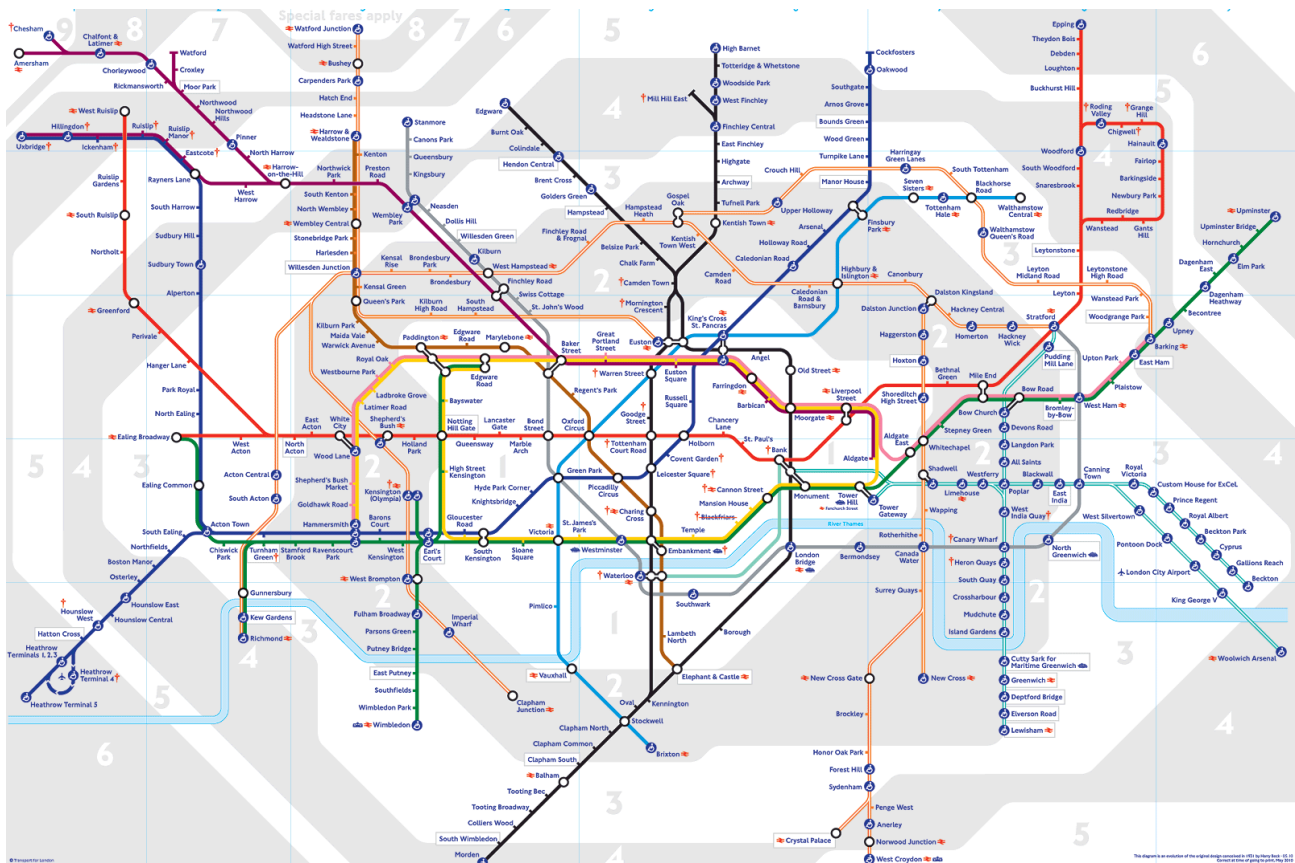
London's public transport network is divided into nine travel zones. Zone 1 is in Central London and zones 6 to 9 are on the outskirts of the city.



An adult cash fare for a single journey in zone 1 is £4.80.

The same fare with Visitor Oyster card, Oyster card or contactless payment card is £2.30. For more details about Tube fares, see the [Transport for London website](http://www.tfl.gov.uk).

A link to the map below: http://www.bbc.co.uk/london/travel/downloads/tube_map.gif



Buses



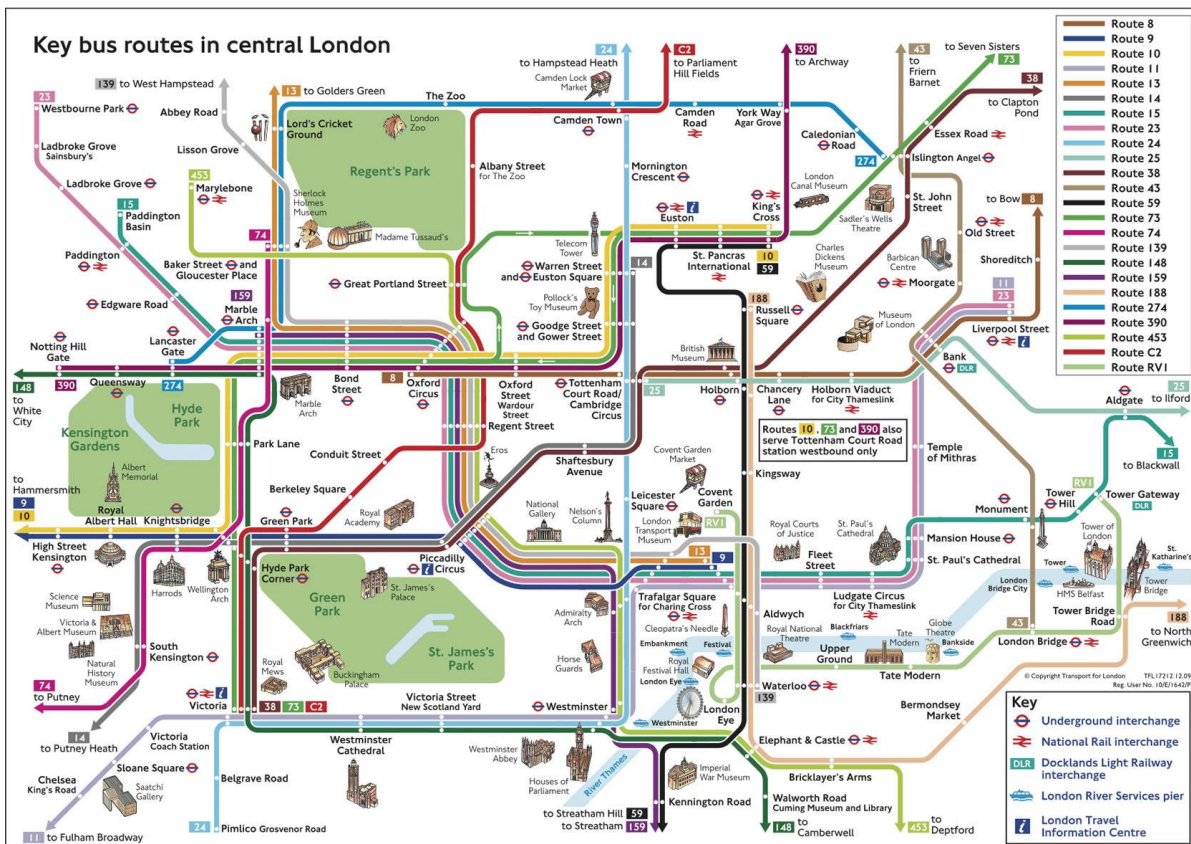
You can use an Oyster or contactless payment card to pay as you go on all London buses that display the sign above. The pay as you go fare is **£1.50**.

You can't use cash to pay for your bus fare.



A link to the map below:

<http://mapseek.info/wp-content/uploads/london-bus-map/london-bus-map-big.jpg>



Trams

You can use an Oyster or contactless payment card to pay as you go on all trams in London. The single pay as you go fare is £1.50. Cash single tickets are available from all ticket machines at tram stops and cost £2.50.

Accommodation information

In this information pack, you can see the hotels and hostels which are close to the Royal College of Nursing's Office.

It is advisable to book early and ensure that you speak with your National Nursing Body or Education Institute regarding subsistence for his meeting.

SoHostel

091 Dean Street. Soho. Westminster. London England.



Room Types

Standard 18 Bed Mixed Dorm
Standard 6 Bed Mixed Dorm
Standard Twin Private
Standard 4 Bed Mixed Dorm
Standard Double Bed Private
Standard 6 Bed Female Dorm

YHA London Central

104-108 Bolsover St, London, England



Room Types

6 Bed Female Dorm
8 Bed Male Dorm
8 Female Dorm
6 Bed Male Dorm
6 Bed Privat

Astor Court Hotel

20, Hallam Street, London, England.



Room Types

Standard 5 Bed Private

Standard 3 Bed Private

Standard Double Bed Private

Standard Twin Private

Standard Single Private

Astor Museum Inn

27 Montague Street, Bloomsbury, London, England.



Room Types

16 Bed Mixed Dorm

10 Bed Mixed Dorm

8 Bed Mixed Dorm

6 Bed Mixed Dorm

4 Bed Mixed Dorm

4 Bed Female Dorm

Marble Arc Inn

49-50 Upper Berkeley Street, Marble Arch, London, England.



Room Types

Standard 3 Bed Private Basic

Double Bed Private Standard

Twin Private Standard

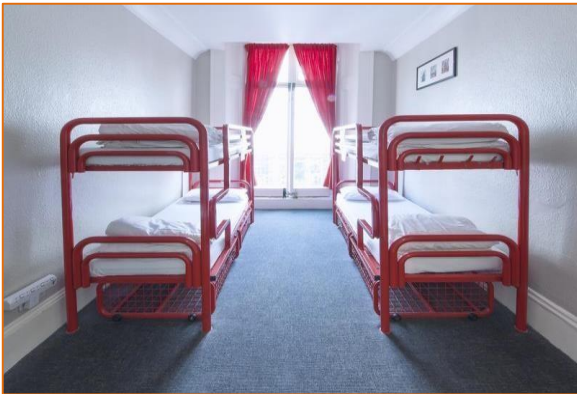
Double Bed Private Standard

Single Private

Astor Queensway

45 Queensborough Terrace, Bayswatet, London, England.

This hotel is a few minutes away from Queensway metro station and the meeting place is 4 metro stations away.



Room Types

6 Bed Mixed Dorm

8 Bed Mixed Dorm

6 Bed Female Dorm

4 Bed Mixed Dorm

Gallery Hyde Park

23 Inverness Terrace, London, England.

This hotel is a few minutes away from Queensway metro station and the meeting place is 4 metro stations away.



Room Types

Basic 24-10-12 Bed Mixed Dorm

Basic 8 Bed Female Dorm

6 Bed Mixed Dorm

4 Bed Mixed Dorm

Standard 3 Bed

Private Twin Private

PubLove @ The Exmouth Arms, Euston

1 Star cross Street, London England.

It is a few minutes away from Warren Street metro station and the meeting place is 1 metro station away.



Room Types

Deluxe 6 Bed Mixed Dorm

Deluxe 6 Bed Female Dorm

Deluxe Double Bed Private

Contact information for the ENSA board

If you have any questions, please do not hesitate to contact us for further information.

You can contact us at:

ENSA official facebook page: <https://www.facebook.com/ensanetwork?ref=hl>

ENSA facebook group: <https://www.facebook.com/groups/274860072206/>

ENSA official e-mail address: ensaagm@gmail.com

We look forward to seeing you in London. Safe travels!

Kind regards the ENSA board



President - Dean Flanagan (Ireland)

Vice president - Mia Andresen (Norway)

Board member - Delphine Thézé (France)

Board member - Erdinc Demirer (Turkey)

Board member - Sanne Fuglsang Nyquist (Denmark)